

Fern Office Chair

Designed for movement and collaboration, the Fern Office Chair adapts to you. With ergonomic support, breathable mesh and effortless mobility, it's perfect for meetings and conference rooms.



Fern Office Chair

Features & Highlights

- ➔ Height-adjustable seat allows users to find their ideal working posture
- ➔ Black frame with a clean, modern profile.
- ➔ 5-Star base With reinforced nylon castors.
- ➔ Adjustable lockable back and a 3-point tilt system.
- ➔ Rounded-back design with breathable mesh.
- ➔ Backed by a 3-year warranty.

Technical Specifications

Model Number	Description	W	D	H	SH
FER001	Fern Office Chair	580	580	820-940	450-550



Fern Office Chair

Fern Range



Model: FER001

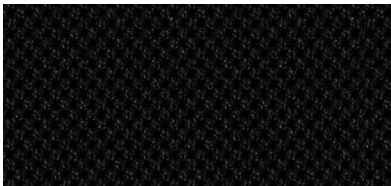
Fern Office Chair

Medium Back

W420 x D580 x H820-940

Seat Height: H420-550

Finish Selection



Black

OS-550



FURNITURE
DESIGNER SPACE SOLUTIONS

Fern Office Chair

General Care Tips

Daily Care: Vacuum fabric upholstery regularly using an upholstery attachment to remove dust, dirt and allergens. This is particularly important for high-use areas like seat cushions and armrests.

Spot Cleaning: For minor spills or stains, blot the area immediately with a clean, dry cloth to absorb as much liquid as possible. Then, use a mild solution of water and mild soap to gently clean the stain. Always blot—never rub—to avoid spreading the stain or damaging the fibers.

What to Avoid

Excessive Water: Avoid soaking the fabric, as too much moisture can lead to mold, mildew and damage to the upholstery padding.

Bleach and Harsh Chemicals: Do not use bleach or harsh chemical cleaners, as these can weaken fabric fibers, cause fading or create permanent discoloration.

Abrasive Materials: Never use steel wool, scouring pads or any abrasive materials on upholstered surfaces, as they can cause permanent damage.

